

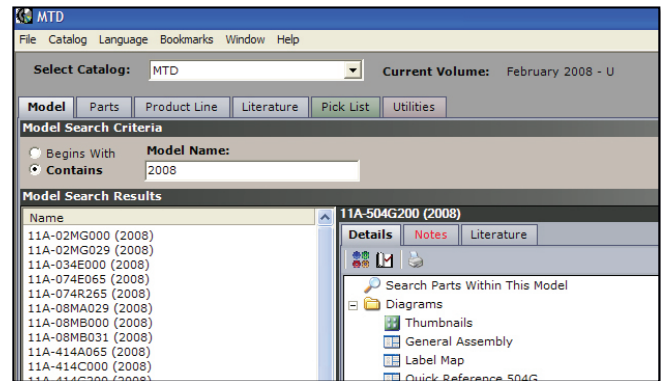


# PartSmart®

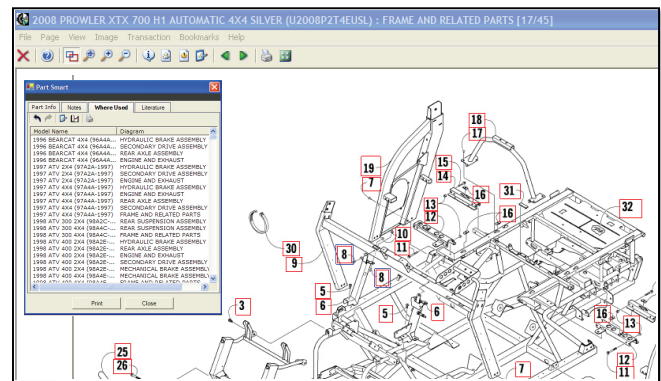
## The Best Way to Look Up Parts

Give your customers the service experience they're looking for with the fastest, most efficient parts lookup system available

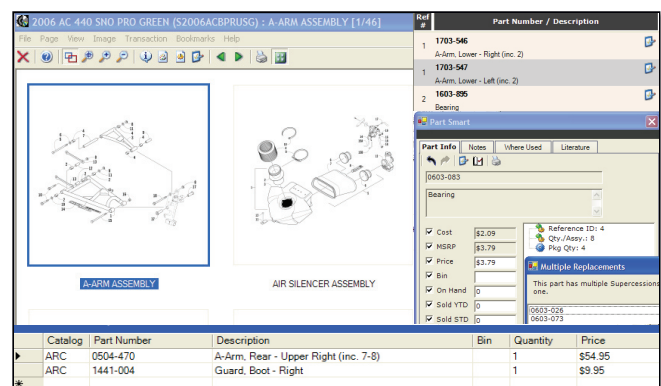
- Access to more than 75 of the leading supplier catalogs from a single application
- Increase productivity by reducing parts lookup time by more than 50%
- Integration with more than 85 of the leading Dealer Business Management Systems to check inventory and create invoices, repair/purchase orders and more
- Search an entire supplier's catalog to find where parts are used
- Ability to zoom in and zoom out to make it easy to read text and illustrations
- Thumbnails streamline diagram selection
- Print illustrations, parts lists or pick lists
- Customize the way you view parts information – part numbers and illustrations together or separately
- View Supplier Notes and Bulletins
- Create your own custom user notes for models and parts
- Easy navigation makes moving through PartSmart effortless and logical using a mouse or keyboard
- Parts description, pricing, supersession and kit information displays on one screen
- Create, print and save multiple pick lists
- Searchable by part number, model number, description and year.



Using PartSmart, searching for the right part is easy – you can search by part number, model number, description or year.



PartSmart's colorization feature allows you to easily see inventory levels\*. Plus, search an entire supplier's catalog to find where parts are used



Parts descriptions, pricing, supersessions, priors and kit information are all displayed on one screen. You can also see quantity on hand and bin location.\*

\*Requires integration to a business management system.

**TO ORDER, CALL 1.800.755.6040 TODAY!**

*PartSmart is simply the best. Enough said. All of the wannabes should pack it up and go away.*

*Charlie Girardi, Plaistow, NH*

**PartSmart has helped us to increase customer satisfaction by 90% and being able to find the right part the first time has increased our profits by 20%. Thanks ARI!**

*Jay Tuckahoe, Southhampton, NY*

**Here's a few of the more than 75 manufacturer catalogs available on PartSmart®**



JOHN DEERE



## Annual PartSmart® subscription includes:

- Automatic updates
- Access to manufacturer catalogs on CD/DVD plus FREE access to the same catalogs on the Internet
- FREE customer support to answer any questions
- FREE upgrades to the PartSmart® application

### Recommended PartSmart Hardware Configuration

- Microsoft Windows 98SE, 2000, XP Professional, Server 2000, or Server 2003 **Note:** Windows 95 and Windows NT are not supported
- Microsoft Internet Explorer version 6 or higher
- Minimum 400 MHz Intel Pentium, 1.0GHz or higher recommended
- Minimum 128 MB RAM, 256 MB or higher recommended
- Minimum 175 MB free hard disk space, more if you copy manufacturer data to hard drive
- 800x600 or higher resolution display with 256 colors
- All the latest Windows service packs and critical updates

**I've tried other programs and I like PartSmart way over the others! I'm in the process of installing PartSmart on another workstation so EVERYONE can use it!**

*Yamaha Dealer in Oklahoma*